



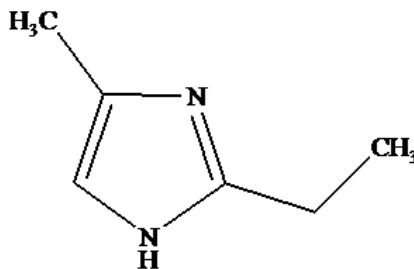
AC Catalysts, Inc.

www.ac-catalysts.com

1600 W. Blancke St.
Linden, NJ 07036

Tel: (908) 474-9393
Fax: (908) 474-9388

Technicure[®] EMI-24 and EMI-24LV (Low Viscosity) 2-ethyl-4-methylimidazole



<u>Typical Properties</u>	<u>EMI-24</u>	<u>EMI-24LV</u>
Appearance	Amber to Yellow Liquid	Amber to Yellow Liquid
Assay (GC)	85% min	83% min
Water Content (KF)	0.4% max	0.4% max
Gardner Color	16 max.	15 max.
Viscosity		1,000 cps max

Performance Properties

- Recommended Use Level with BADGE EEW 190: 1-5 PHR
- Working Life: 9-10 Hours
- Gel Time @150C: 60 sec.
- Gel Time @100C: 7 Minutes
- HDT: 315F (325F with LV)

Uses

2-ethyl-4-methylimidazole is used as an epoxy catalyst in adhesives, coatings, composites, or as an accelerator for anhydride curing agents. EMI-24 also delays the cross-linking of polyester reactions. EMI-24 is also available as a low viscosity version, EMI-24LV

A&C Catalysts, Inc. is not responsible for the use of the information, and no warranty is made of the merchantability or fitness of any product. Purchasers of any product must determine whether the product is acceptable for their particular purpose, under their own operating conditions. Moreover, nothing herein waves any of A&C Catalysts, Inc. conditions of sale. Nothing herein shall imply the nonexistence of any relevant patents or to constitute permission, inducement or recommendation to practice any invention covered by any patent, without authority from its owner.