



AC Catalysts, Inc.

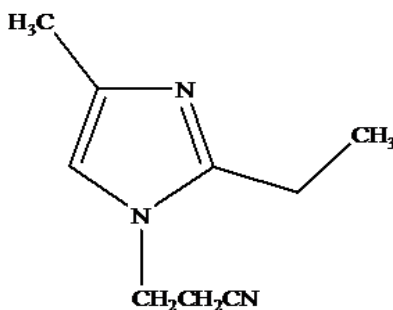
www.ac-catalysts.com

1600 W. Blancke St.
Linden, NJ 07036

Tel: (908) 474-9393
Fax: (908) 474-9388

Technicure® Imidazole Curing Agents

EMI-24-CN



1-(2-cyanoethyl)-2-ethyl-4-methylimidazole

Typical Properties

	<u>EMI-24-CN</u>
Appearance	Amber to Brownish Liquid
Assay (GC):	85% min. (sum of 2 regio-isomers)
Water Content:	0.5% max. (KF)
EMI-24 Content:	4.0% max.
Free Acrylonitrile (GC/MS):	500 ppm max.
Gardner Color:	less than 16
Viscosity:	200 cps min.
Methanol Content (GC):	2.0% max

Performance Properties

- Recommended Use Level with BADGE EEW 190: 4-6 PHR
- Working Life: 3 days
- Gel Time @150C: 90 sec.
- Gel Time @100C: 15 Minutes
- HDT: 322F

Uses

1-(2-cyanoethyl)-2-ethyl-4-methylimidazole is used as an epoxy catalyst for impact and heat resistant adhesives, accelerator for anhydrides (e.g. electrical encapsulation). Catalyst providing extended latency (2 – 3 days) and compatibility with liquid resin systems. Fiber reinforced composite systems. Neutralizer for acid stabilizers in diazo copying compounds. Printing systems for acrylic fabrics with cationic dyes.

A&C Catalysts, Inc. is not responsible for the use of the information, and no warranty is made of the merchantability or fitness of any product. Purchasers of any product must determine whether the product is acceptable for their particular purpose, under their own operating conditions. Moreover, nothing herein waves any of A&C Catalysts, Inc. conditions of sale. Nothing herein shall imply the nonexistence of any relevant patents or to constitute permission, inducement or recommendation to practice any invention covered by any patent, without authority from its owner.